

SafetyTorq™ Tubing Drain

Tubing drains allow you to reliably drain the production tubing prior to pulling out of hole. This prevents the difficult and environmentally unfriendly process of pulling wet tubing. Once on surface, the tubing drain can be redressed for future use†.

The patented SafetyTorq™ Tubing Drain was designed with rapid well installation and work over in mind without neglecting life cycle costs of operating a well. This tubing drain can be easily installed with power tongs without fear of damaging the tubing drain. This enhances safety by eliminating the need for manual wrenches and snipes and ensuring proper make-up torque is achieved every time.



Features

- Available for both standard and high temperature applications
- Compact design allows rapid installation with power tongs
- Torque ring compatible when no-turn tools aren't run
- Suitable for horizontal applications
- Larger sleeve shoulder prevents sleeve from contacting the casing
- Industry leading thread treatment for prolonged run life
- Viton seals standard — others available upon request
- Calibrated brass shear screws provide consistent shear values and reduce wear on steel parts, permitting multiple reuse
- All components precisely manufactured in ISO 9001 environment
- Multiple rebuilds allowed, reducing total cost of ownership
- Pin by Pin construction

Materials of Construction

NOMINAL SIZE	BODY MATERIAL	SLEEVE MATERIAL	SCREW MATERIAL
2-3/8"	AISI 1026	AISI 4140-L80	Proprietary custom grade brass
2-3/8" -8P *	AISI 4140-L80	AISI 4140-P110	
2-7/8"	AISI 1026	AISI 4140-L80	
2-7/8" -9P *	AISI 4140-L80	AISI 4140-L80	
3-1/2"	AISI 1026	AISI 4140-L80	
3-1/2" -10P*	AISI 4140-L80	AISI 4140-L80	
4-1/2"	AISI 4140-L80	AISI 4140-L80	
5-1/2"	AISI 4140-L80	AISI 4140-L80	

† Use only authentic Plainsman screws and seals for rebuilding. Plainsman recommends following the Repair & Handling Procedure PB-TBGD04.

* Uses 90D O-rings

SAFETYTORQ™ TUBING DRAIN

MADE IN CANADA

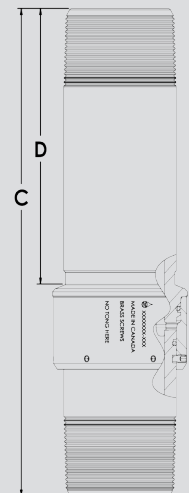
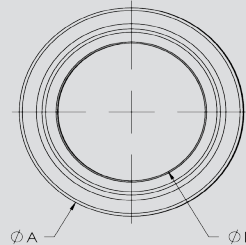


SAFETYTORQ™ TUBING DRAIN



THREAD SIZE ¹	OD (A) (IN)	ID (B) (IN)	LENGTH (C) (IN)	MAX # OF SCREWS	MAX SHEAR PRESSURE ² (PSI)	SHEAR PRESSURE PER SCREW ^{2,3} (PSI)	PARTING LOAD IN TENSION ⁴ (1000 LB)	NECK LENGTH (D)
2-3/8 EUE	3.44 (87mm)	2.06 (52mm)	14.75 (375mm)	6	5,400 (37,230 kPa)	900 (6,205)	For 1026 72	8.34
				8	7,200 (49,641 kPa)		For L80 95	
2-7/8 EUE ⁶	3.93 (100 mm)	2.45 (62 mm)	14.75 (375 mm)	6	4,800 (33,100 kPa)	800 (5,515 kPa)	For 1026 105	8.34
2-7/8 EUE	4.10 (104 mm)	2.45 (62 mm)	14.75 (375 mm)	9	7,200 (49,641 kPa)	800 (5,515 kPa)	For L80 145	8.34
3-1/2 EUE ⁶	4.50 (115 mm)	2.97 (75 mm)	14.75 (375 mm)	6	4,320 (29,780 kPa)	720 (4,960 kPa)	For 1026 145	8.34
3-1/2 EUE	4.75 (121 mm)	2.97 (75 mm)	14.75 (375 mm)	10	7,200 (49,641 kPa)	720 (4,960 kPa)	For L80 200	8.34
4-1/2 EUE ^{6,7}	5.62 (143 mm)	3.96 (101 mm)	15.28 (389 mm)	6	4,320 (29,780 kPa)	720 (4,960 kPa)	200	8.59
5-1/2 LT&C ⁷	6.25 (158 mm)	4.97 (126mm)	17.00 (432 mm)	6	4,000 (27,580 kPa)	667 (4,600 kPa)	225	9.46

- Other sizes available — please contact Plainsman
- These values will vary ± 10% dues to material and manufacturing tolerances
- When using less than the maximum # of screws, space them evenly around the sleeve
- If more than 30% of this load is applied during an intervention, replace Tubing Drain body with a new one
- Maximum operating temperature: Viton seals — 400°F (205°C), Perfluoroelastomer seals — 554°F (290°C)
- NUE available on request
- Other thread styles available on request
- Coatings are available for certain sizes. Contact Plainsman for details.



Note:

- Same screws fit in all sizes of drains
- Use only authentic Plainsman replacement screws. Installation Torque: 10 lb-in
- Do not use stainless steel screws
- Plainsman recommends following the Repair & Handling Procedure PB-TBGD04

MADE IN CANADA

