

Reciprocating Style (DogBone) Shear Coupling

Ideal For Reciprocating Application In Problem Wells

The Reciprocating Style DogBone Shear Coupling has been designed for reciprocating applications. It contains an engineered threaded joint that will break when the specified axial load is applied. The joint is pre-stressed to maximize fatigue resistance and prevent premature failure of the shear coupling.

Shear Couplings are used to reliably separate the rod string from the bottom hole assembly when the rod gets stuck. This prevents the costly and environmentally unfriendly process of pulling tubing and rods out simultaneously.

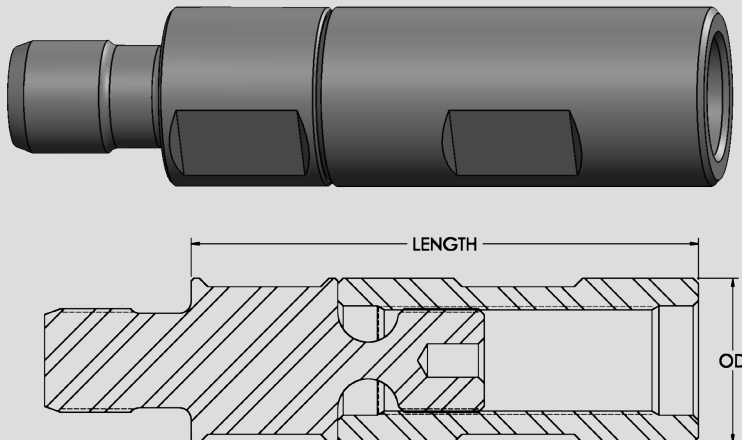
Features

- Designed for reciprocating applications
- Full size and slim hole models available
- Protects rod string from yielding or parting due to overload conditions while freeing stuck pumps
- Designed to withstand cyclical compressive loading without shearing prematurely
- Shear is preloaded during assembly to prevent fatigue failure while in service
- Strong, reliable roll-formed box and pin end threads (adheres to API Specification 11B)
- Custom coupling design and manufacturing available
- Box by box or pin by box construction

PIN BY BOX			
SIZE ¹ (IN)	OD (IN)	LENGTH (IN)	SHEAR RATING (LB)
7/8 (FS) (22 mm)	1.81 (46 mm)	5.63 (142 mm)	22,000 LBF (98 kN)

Ordering Information

1. Other sizes available, please contact Plainsman
2. All products are right hand threads
3. Please contact Plainsman for lead times

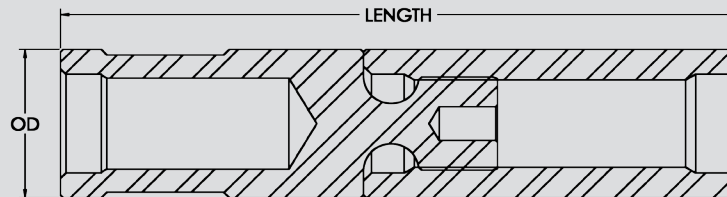


RECIPROCATING STYLE (DOGBONE) SHEAR COUPLING

BOX BY BOX			
SIZE ¹ (IN)	OD (IN)	LENGTH (IN)	SHEAR RATING (LB)
3/4 (FS) (19 mm)	1.63 (41 mm)	7.25 (184 mm)	20,000 LBF (88 kN)
			26,000 LBF (115 kN)
			30,000 LBF (133 kN)
7/8 (FS) (22 mm)	1.81 (46 mm)	7.25 (184 mm)	22,000 LBF (98 kN)
			26,000 LBF (115 kN)
			30,000 LBF (133 kN)
7/8 (SH) (22 mm)	1.63 (41 mm)	7.25 (184 mm)	40,000 LBF (178 kN)
1 (SH) (25 mm)	2.00 (51 mm)	7.25 (184 mm)	26,000 LBF (115 kN)
			35,000 LBF (156 kN)
			40,000 LBF (178 kN)
			50,000 LBF (222 kN)
1 (FS) (25 mm)	2.19 (55 mm)	7.25 (184 mm)	35,000 LBF (156 kN)
1-1/8 (28 mm)	2.25 (57 mm)	8.13 (206 mm)	40,000 LBF (178 kN)

Ordering Information

1. Other sizes available, please contact Plainsman
2. No additional coupling needed
3. All products are right hand threads
4. Please contact Plainsman for lead times



Make-up Procedure:

Follow recommended make-up procedure of rod manufacturer for sucker rod grades being used. The Reciprocating (Dogbone) Shear Coupling is compatible with all the sucker rod grades. Never apply torque across the engineered threaded joint; use wrench flats to tighten each end individually (review PB-CPLS13 for details).

MADE IN CANADA

