

Sucker Rod Couplings

Features

- Economical sucker rod coupling method
- Body Material: AISI 8630
- Threads rolled to API 11B, Section 8 Sucker Rod Connections

Sizes

STANDARD	OD (IN.)		LENGTH (IN.)
	REG	SLIMHOLE	
5/8"	1.500	1.250	4.00
3/4"	1.625	1.500	4.00
7/8"	1.812	1.625	4.00
1"	2.187	2.000	4.00
1-1/8"	2.375	N/A	4.50
CHANGEOVER			
7/8" x 3/4"	1.812	1.625	4.00
1" x 3/4"	2.187	2.000	4.00
1" x 7/8"	2.187	2.000	4.00
5/8" x 3/4"	1.625	1.500	4.00
POLISHED ROD			
3/4"	1.625	1.500	4.00
7/8"	1.812	1.625	4.00
1"	2.187	2.000	4.00
1-1/8"	2.375	N/A	4.50



SUCKER ROD COUPLINGS

ToughTorq™ Couplings

The ToughTorq™ high strength couplings are designed to work with ToughTorq™ PL5 Spin-Through Couplings and high torque PC Pump applications. This coupling has been specially designed for use with high torque rod applications such as Weatherford® T66/XD and HD sucker rods and Alberta Oil Tool Drive Rods®††. ToughTorq™ high strength couplings are interchangeable with Tenaris® UHS, Weatherford® Hi-T™ and Alberta Oil Tool® high strength couplings.

ToughTorq™ high strength coupling threads are cold formed, which reshape the steel fibres to follow the thread profile. This process improves resistance to corrosion and abrasion, leaving a hardened thread flank and residual compressive stress in the thread root. This increases fatigue resistance in all forms of loading (tension and torsion). Traditional thread cutting and burnishing do not provide the benefits of cold-forming.

Sizes

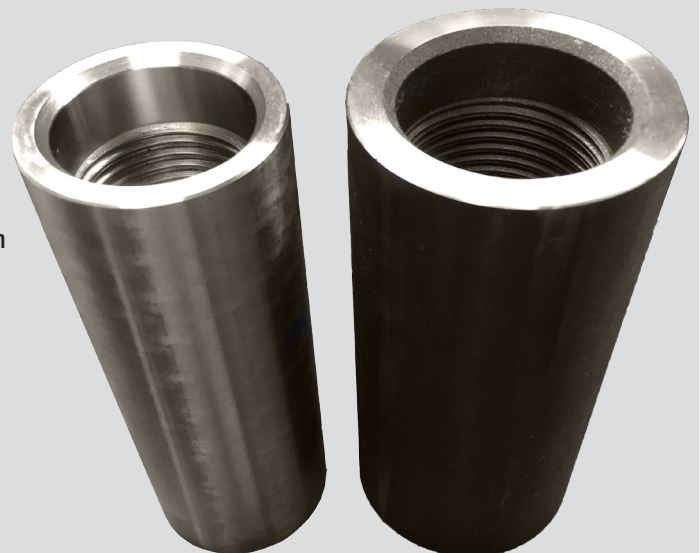
NOMINAL SIZE	OD (IN.)	LENGTH	TORQUE RATING (LB • FT) ²	TYPE	GRADE ¹
7/8"	1.625	4.00	1,200 (1,625 N • m)	SLIMHOLE	High Strength (HS)
1"	2.000	4.00	2,500 (3,390 N • m)	SLIMHOLE	

Features

- Designed for high strength applications
- Cold-formed, fully rolled threads to maximize strength and fatigue resistance
- Formed (cold rolled) box threads, not cut, conforming to API 11B
- Anti-corrosion coating for shipping and storage
- Maximum face contact area increases connection strength

Notes:

- 1) ToughTorq™ HS couplings are manufactured from high quality heat-treated, stress-relieved 4140 Cr-Mo steel with 115 ksi (758 MPa) minimum yield strength. Each coupling is stamped 'HS' for easy identification.
- 2) To maximize fatigue life, Plainsman recommends using a 0.8 service factor.
- 3) Contact faces on the pin and coupling must be clean & dry before makeup.



†† Weatherford and Alberta Oil Tool are in no way affiliated with Plainsman Mfg. Inc.

Phone: 780-496-9800 Fax: 780-463-9800 Toll Free: 1-877-448-0586

www.plainsmanmfg.com

Specifications subject to change without notice



Coatings

Plainsman provides one* coating option to prolong the life of the coupling.

CODE	NAME	DETAILS
CT2	SoftCoat™	For combating abrasion between coupling and tubing. Recommended when the tubing has not been hardened. A soft urethane (95A durometer) is bonded to the outside of the coupling, preventing abrasive particles, like sand, from wearing the interface between the tubing and coupling.

* Other coatings may be available upon request: contact Plainsman.

SUCKER ROD CONNECTION SIZE	OD OF COUPLING	OD WITH COATING	COLOUR
3/4"	1.63"	1.98"	Blue
7/8"	1.63"	1.98"	Blue
1"	2.00"	2.24"	Blue
1-1/8"	2.25"	2.50"	Blue

