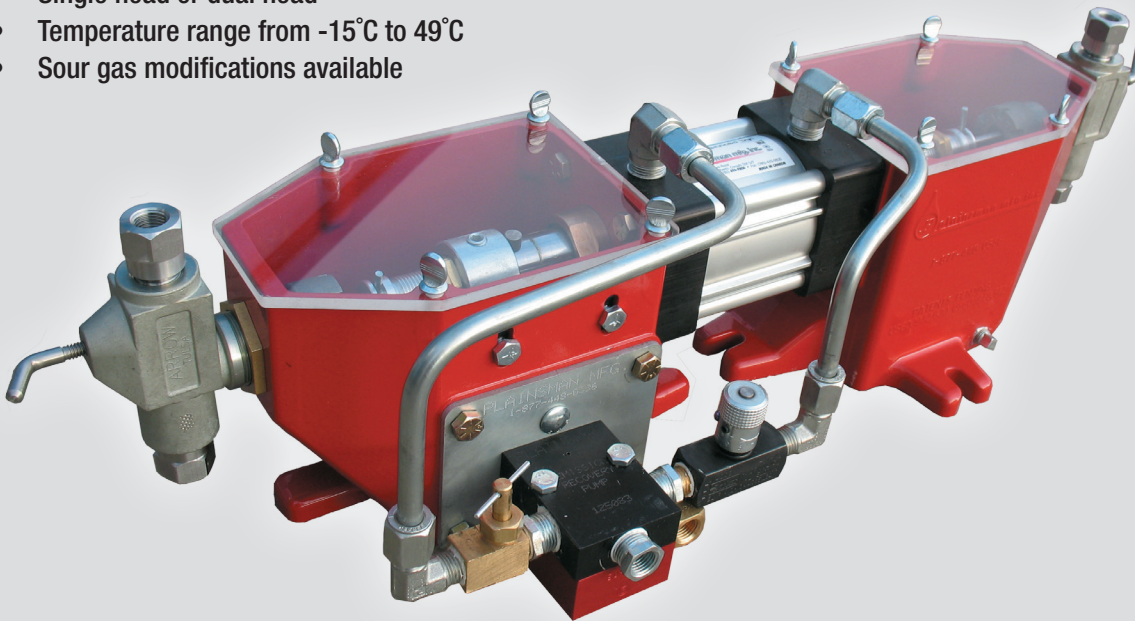


# Horizon ER™ Pump

This pneumatic piston pump economically eliminates GHG emissions from chemical injection. It operates on differential pressures as low as 10 psi and inlet pressures up to 250 psi, with all exhaust gas going back into the pipeline. Volume adjustment is simple and versatile with both stroke rate and stroke length adjustments.

## Features

- Recover exhaust gas into pipeline
- 250 psi max supply pressure
- 10 to 100 psi differential pressures
- Proven Arrow fluid end and Plainsman Microswitch
- Inject up to 66 gallons (250L) per day
- No lubricator required
- Environmentally friendly
- Single head or dual head
- Temperature range from -15°C to 49°C
- Sour gas modifications available



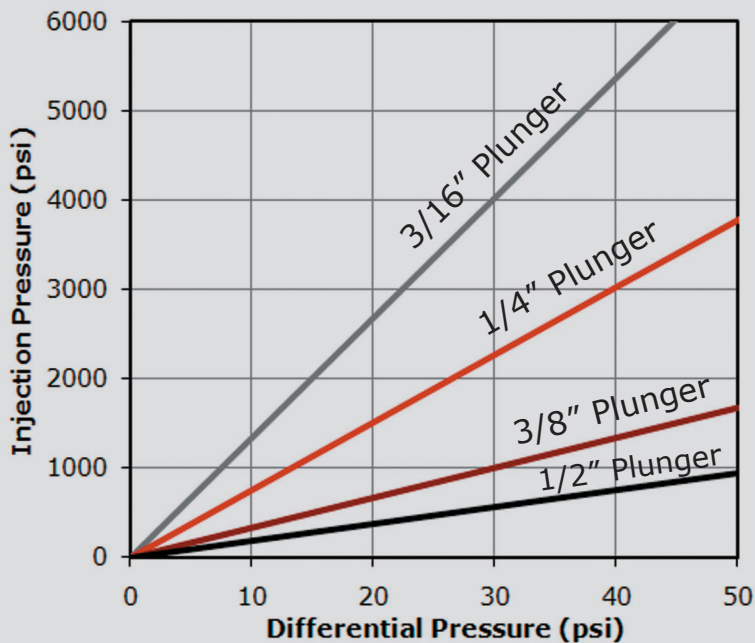
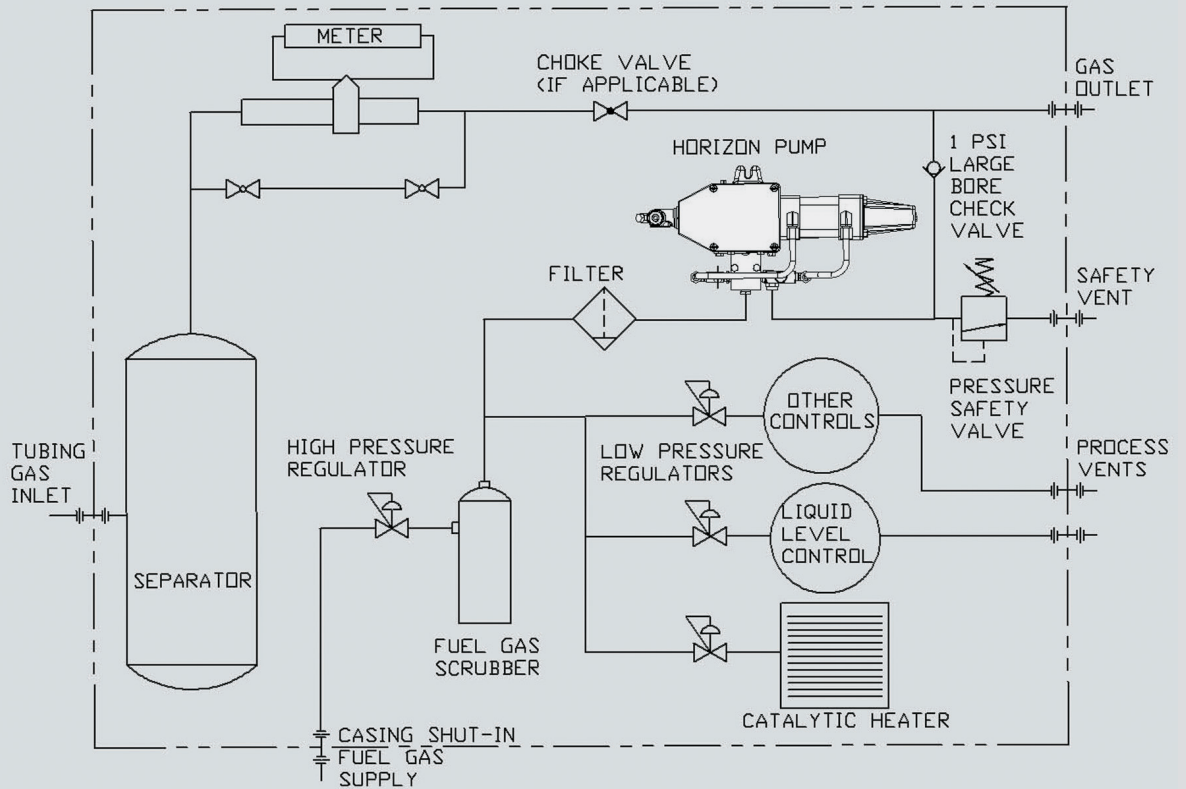
Also available with low emission switch for low pressure and reduced emission operation

VOLUMETRIC SPECIFICATIONS		
Plunger Size	Volume	
	Minimum	Maximum
3/16"	200 mL/day	35 L/day
1/4"	500 mL/day	65 L/day
3/8"	1 L/day	155 L/day
1/2"	2 L/day	250 L/day

# HORIZON ER PUMP



## Typical Installation\*:



## Order Information:

1. Single or Dual Head
2. Chemical being injected
3. Packing/O-Rings
4. Stainless or Ductile
5. Injection Rate
6. Plunger Size
7. Injection Pressure

\*Contact Plainsman for more details

MADE IN CANADA



Phone: 780-496-9800 Fax: 780-463-9800 Toll Free: 1-877-448-0586

www.plainsmanmfg.com

Specifications subject to change without notice

(8), PB-CHER02